

In the interest of conserving resources, we are no longer shipping manuals with products. Please visit [www.clontech.com/manuals](http://www.clontech.com/manuals) to obtain an electronic version.

**PRODUCT: Human Genomic Library**

**CAT. #:** HL1067j

**LOT #:** 6080450

**STORAGE CONDITIONS:**

SHORT-TERM STORAGE (< 6 MONTHS)  
4°C

LONG-TERM STORAGE (> 6 MONTHS)  
-70°C

**SHELF LIFE:**

1 year from date of receipt under proper storage conditions

**SHIPPING CONDITIONS:**

Dry Ice (-70°C)

**PACKAGE CONTENTS:**

- 0.3 ml library lysate in 1X lambda dilution buffer and 7% DMSO
- 0.5 ml host strain
- Lambda Library Protocol Handbook (PT1010-1)

**TITER:**  $\geq 10^8$  pfu/ml

**CLONING VECTOR:** EMBL3 SP6/T7

**CLONING SITE:** *Bam*H I

**HOST STRAIN:** K802

**DNA SOURCE:**

normal, whole placenta from a 27-yr-old Caucasian

**NOTE:** No further information on the DNA source was made available to CLONTECH.

---

**QUALITY CONTROL DATA**

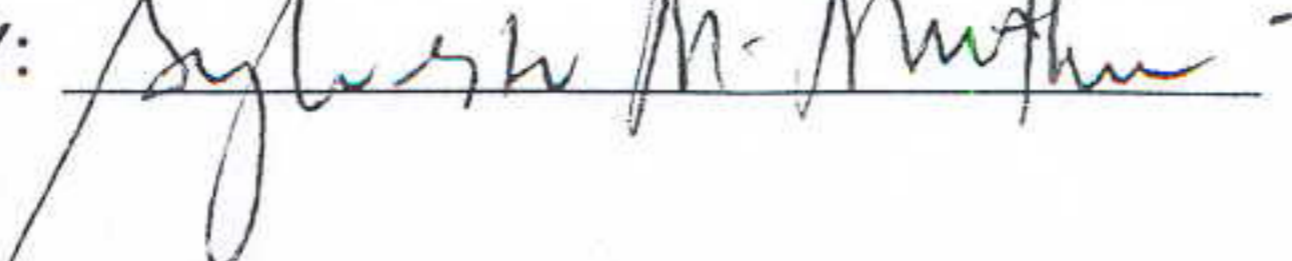
**NUMBER OF INDEPENDENT CLONES:**  $1.5 \times 10^6$

**AVERAGE INSERT SIZE:** 16 kb

**INSERT SIZE RANGE:** 8 - 21 kb

**AMPLIFICATION:** This library was amplified once in K802.

**ADDITIONAL NOTES:** The DNA was partially digested with *Mbo* I and the fragments were separated on a sucrose gradient to produce a size range between 9 and 23 kb before cloning into the *Bam*H I site of EMBL3 SP6/T7. The insert DNA can be excised by using *Xho* I, *Sac* I, or *Sfi* I.

APPROVED BY: 

(PA72349)

FOR RESEARCH USE ONLY



**Clontech**

United States/Canada  
800.662.2566

Asia Pacific  
+1.650.919.7300

Europe  
+33.(0)1.3904.6880

Japan  
+81.(0)77.543.6116

Clontech Laboratories, Inc.  
A Takara Bio Company  
1290 Terra Bella Ave.  
Mountain View, CA 94043  
Technical Support (US)  
E-mail: [tech@clontech.com](mailto:tech@clontech.com)  
[www.clontech.com](http://www.clontech.com)

**Quality Control of Library**

continued

**LIBRARY: Human Genomic Library****CAT. #:** HL1067j**LOT #:** 6080450**1. INSERT SIZE RANGE ANALYSIS**

The insert size distribution of this library was determined by restriction enzyme digestion.

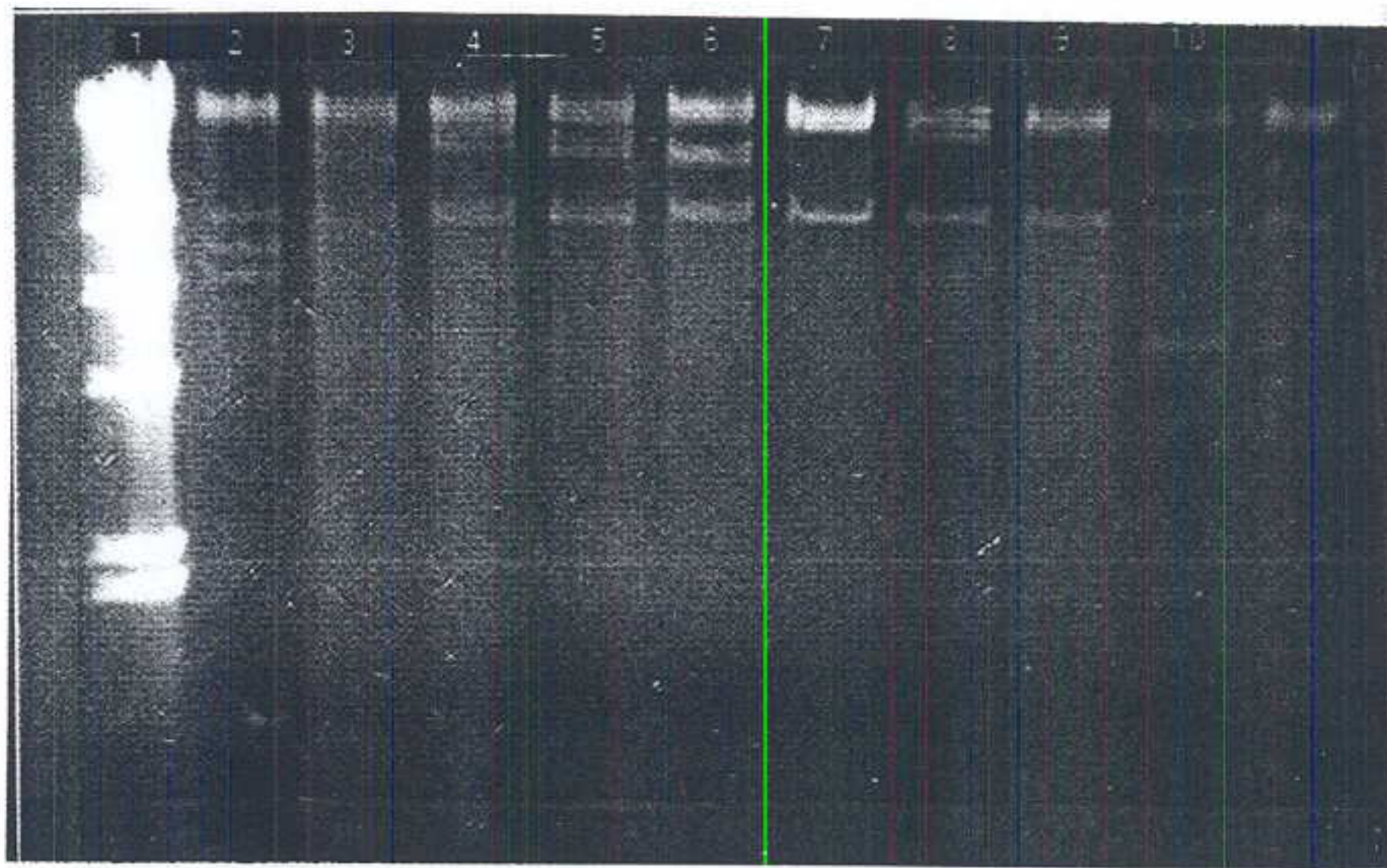
Ten plaques were randomly picked and their DNA isolated using Lambda-TRAP PLUS (#K1101-1) for restriction enzyme digestion. The insert sizes, as determined by digestion with *Xho* I, were used to determine the average insert size.

NOTE: The vector arms are 9 kb and 21 kb.

**LANE:**

1  $\lambda$ Hind III DNA size markers

2-11 Representative insert sizes

**Clontech**

**United States/Canada**  
800.662.2566

**Asia Pacific**  
+1.650.919.7300

**Europe**  
+33.(0)1.3904.6880

**Japan**  
+81.(0)77.543.6116

Clontech Laboratories, Inc.  
ATakara Bio Company  
1290 Terra Bella Ave.  
Mountain View, CA 94043  
Technical Support (US)  
E-mail: tech@clontech.com  
www.clontech.com

© Copyright 1997, CLONTECH Laboratories, Inc.